



# OP Electric Pedal Adjuster – Manual

v0.4 – January 24th, 2022

# General

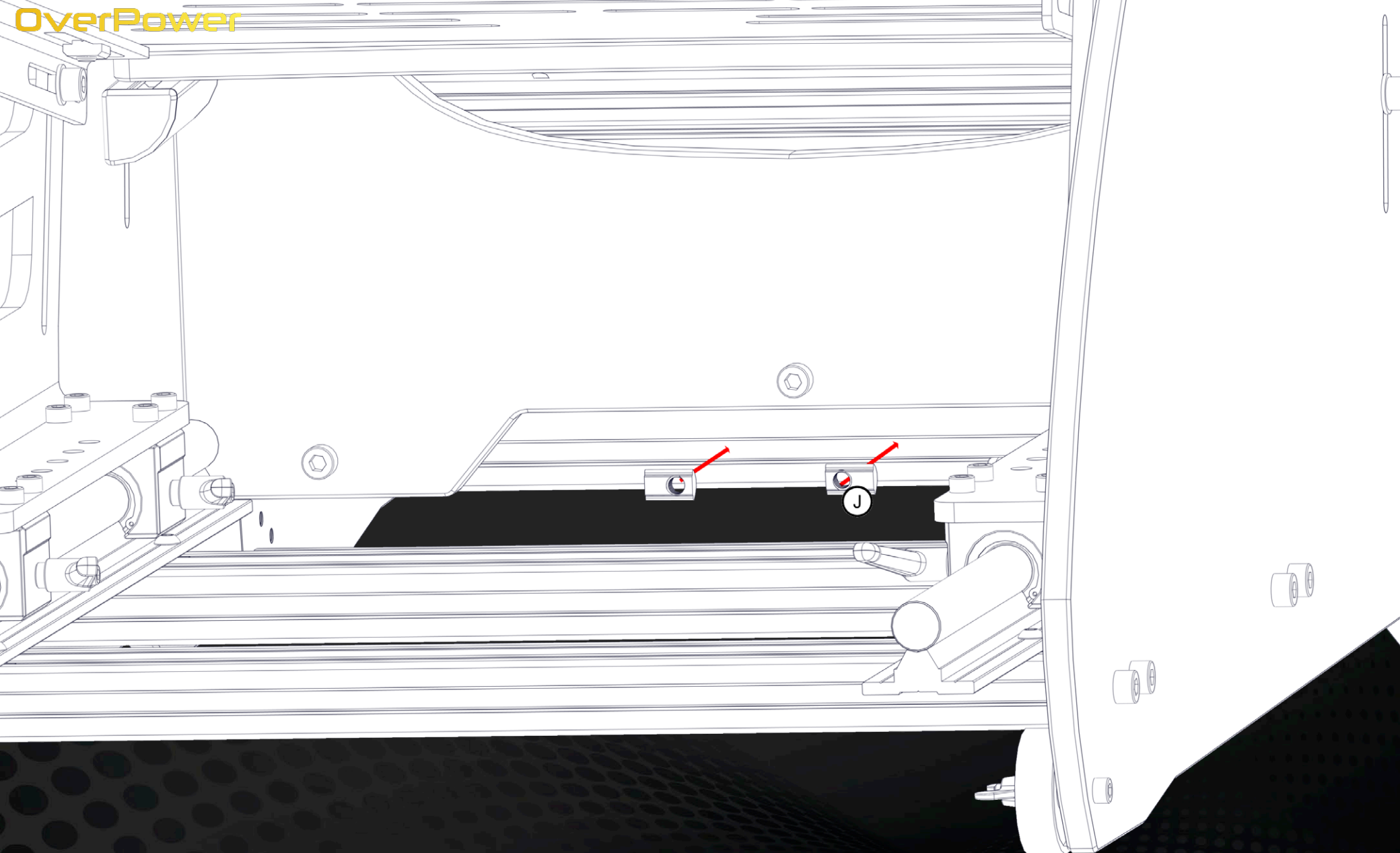
- Follow the instructions carefully in chronologic order as the instruction obtains important steps in correct sequence for having a smooth assembly experience
- Treat all parts with special care. There's a risk for cosmetic damage during the assembly process which we do not want you to occur.
- Tighten all screws firmly, but do not overtighten them. Overtightening might cause damage to screws, nuts, threads as well as cosmetic damage to aluminium and HPL parts.
- If you encounter any issues or have any questions regarding our products, contact us at [support@overpower.gg](mailto:support@overpower.gg). We are happy to help you!

# Preparation

- Find yourself enough space for the assembly process
- Find a carpet or other soft surface to assembly on
- The assembly will take approximately 30 minutes, reserve enough time to assembly the product on one go
- After opening the package, check the parts received and compare them to the part list to make sure you have received all the parts for the product
  - In case there's a part missing, contact us at [support@overpower.gg](mailto:support@overpower.gg)

# Part list

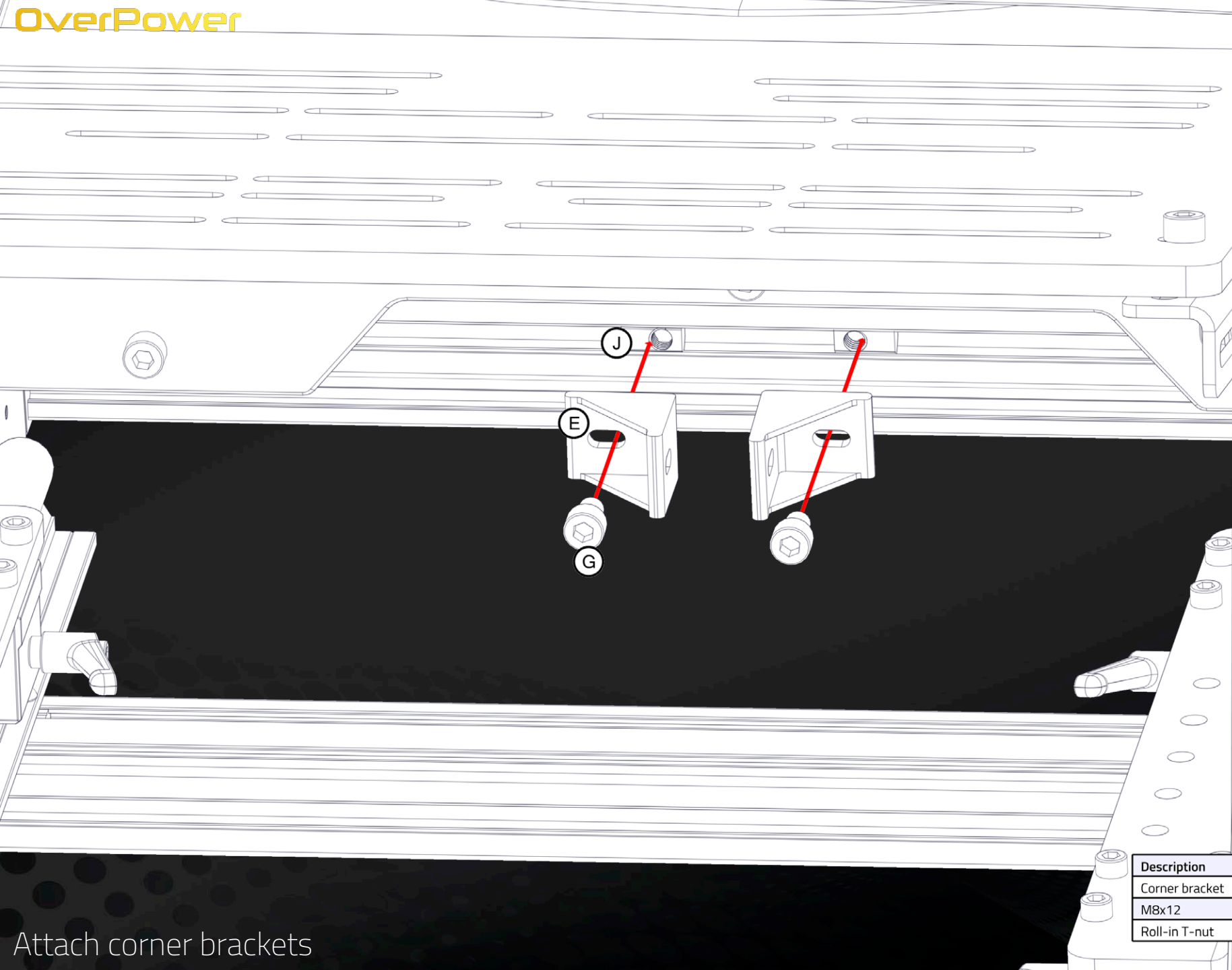
- 3030 slide M8, 4 pcs, (A)
- Actuator control panel, (C)
- Actuator power supply, (D)
- Corner bracket, 2pcs, (E)
- Linear actuator, (F)
- M8x12, 2pcs, (G)
- M8x40, 4pcs, (I)
- Roll-in T-nut, 2pcs, (J)
- Screws and nuts for control panel, (K)



Description	BOM ID	Qty
Roll-in T-nut	J	2

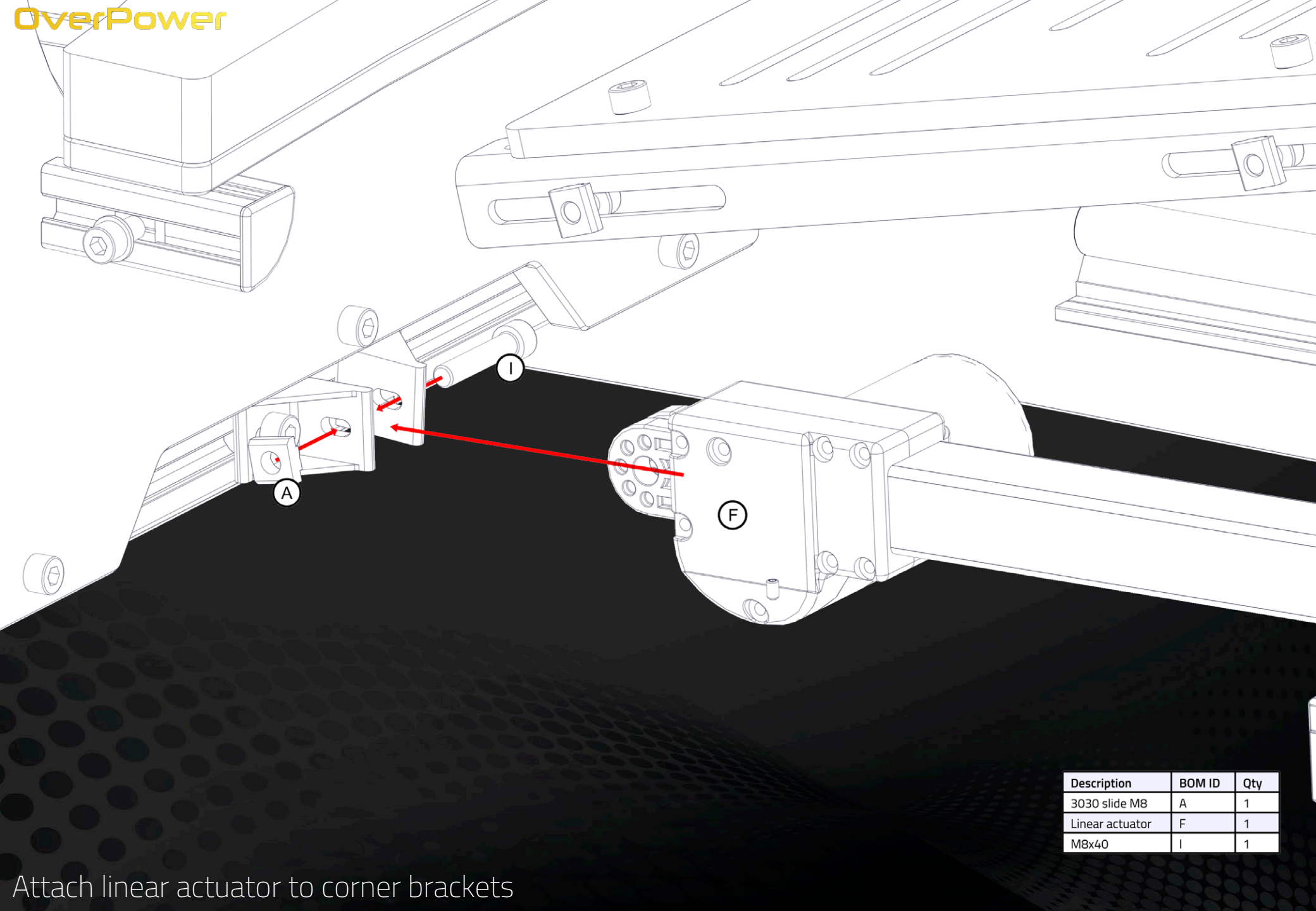
Insert roll-in T-nuts to the 3060 profile, below vertical support component





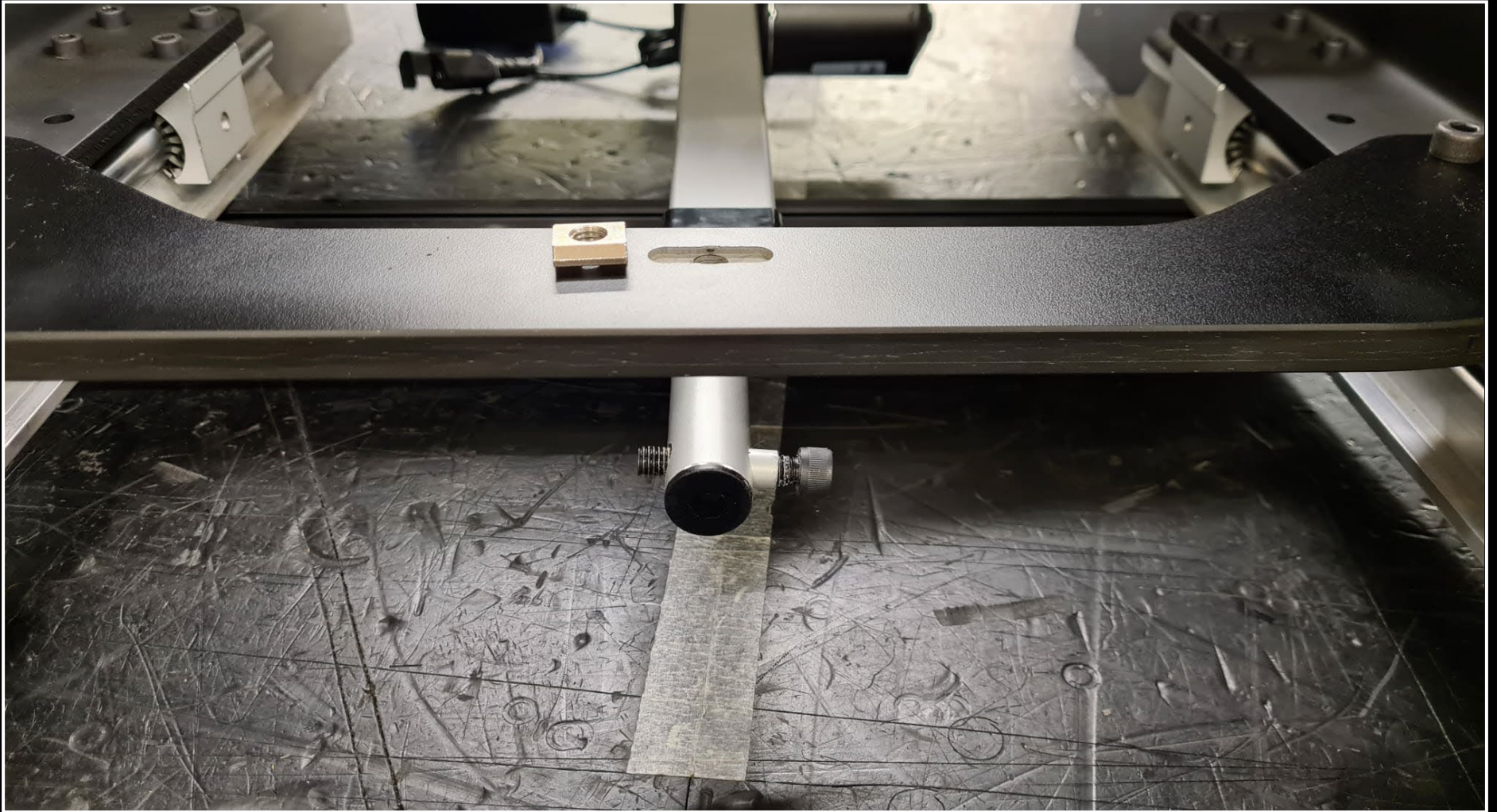
Description	BOM ID	Qty
Corner bracket	E	2
M8x12	G	2
Roll-in T-nut	J	2

Attach corner brackets



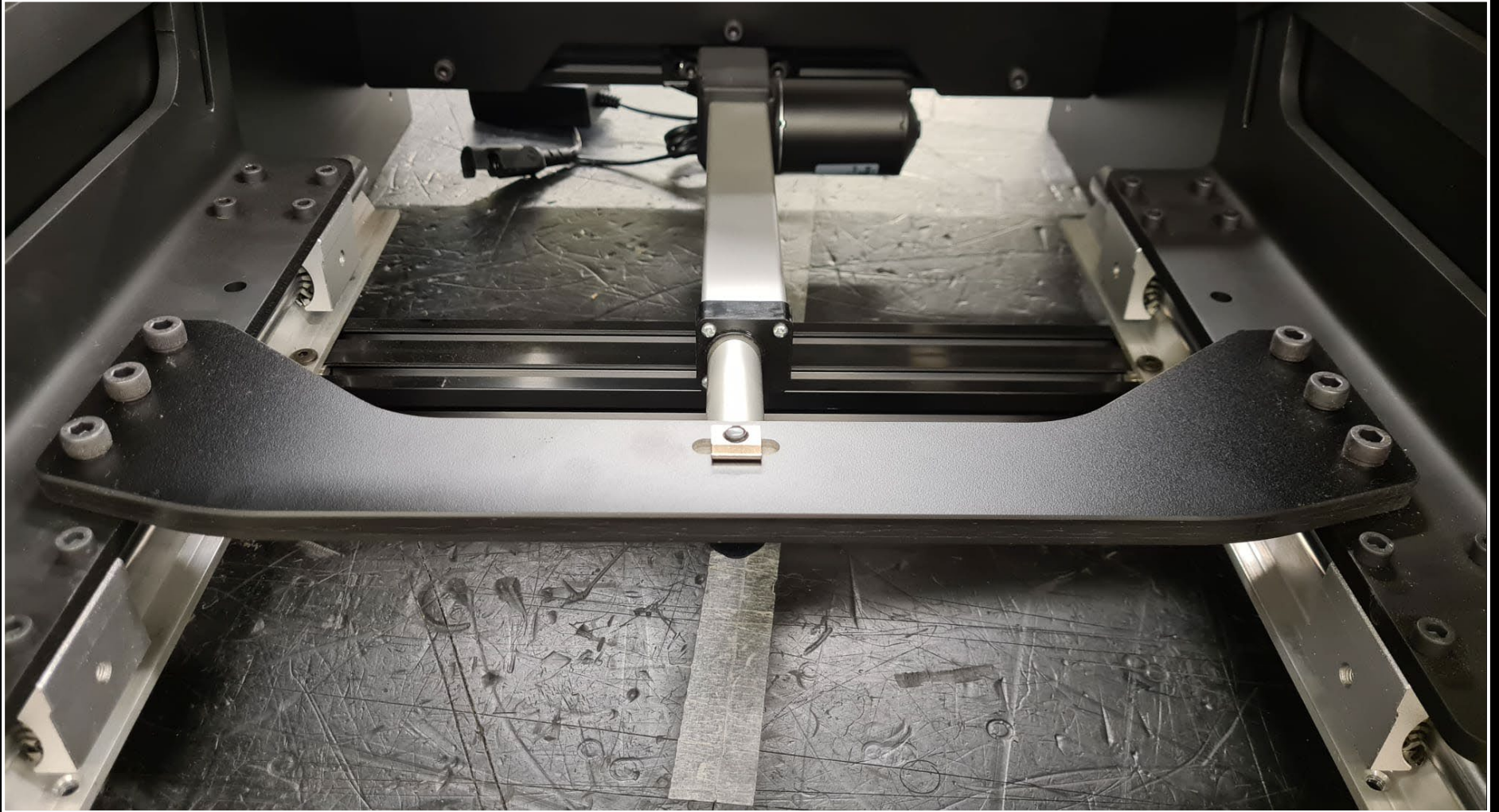
Description	BOM ID	Qty
3030 slide M8	A	1
Linear actuator	F	1
M8x40	I	1

Attach linear actuator to corner brackets

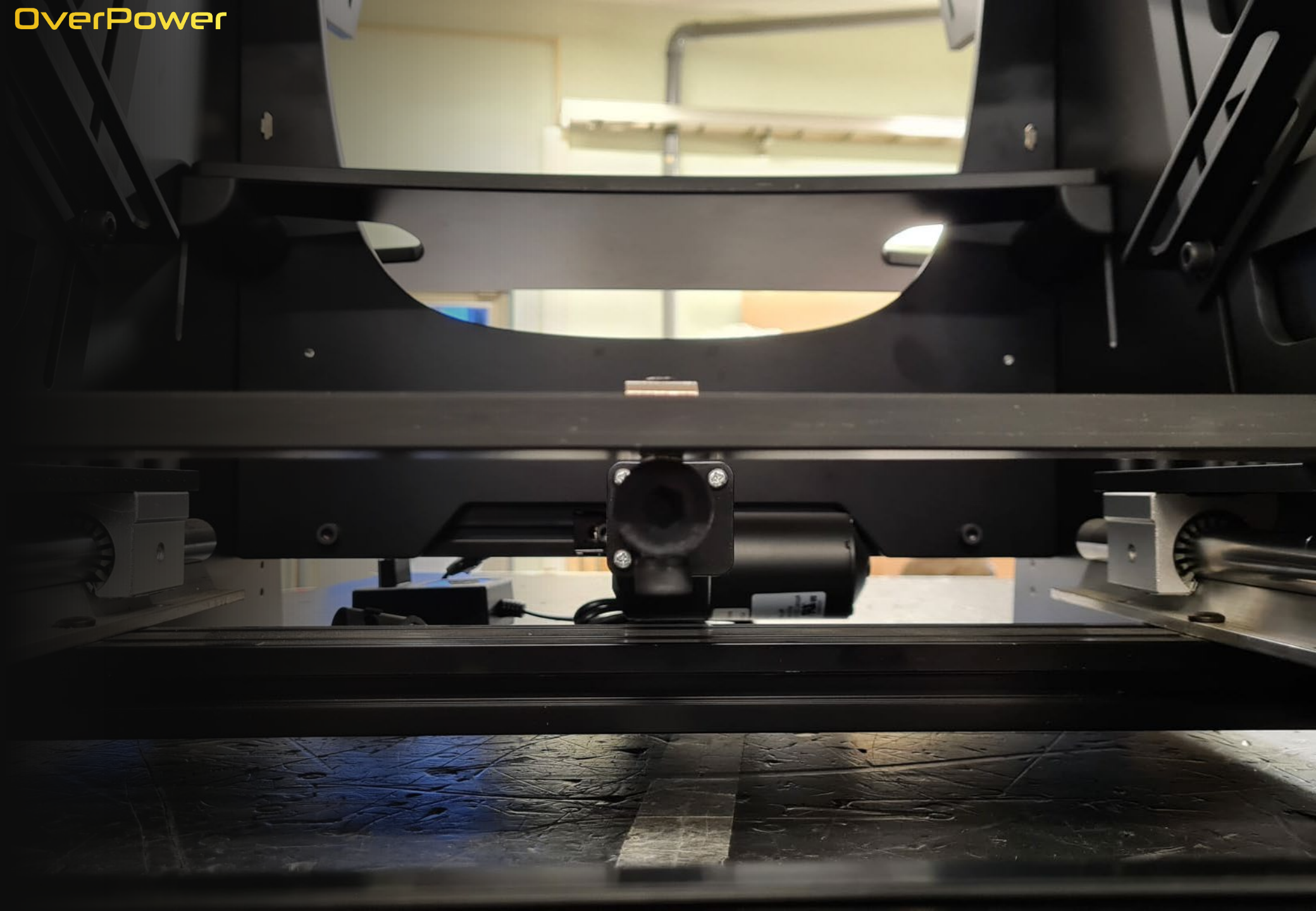


Insert the M8x40 with sleeve to actuator

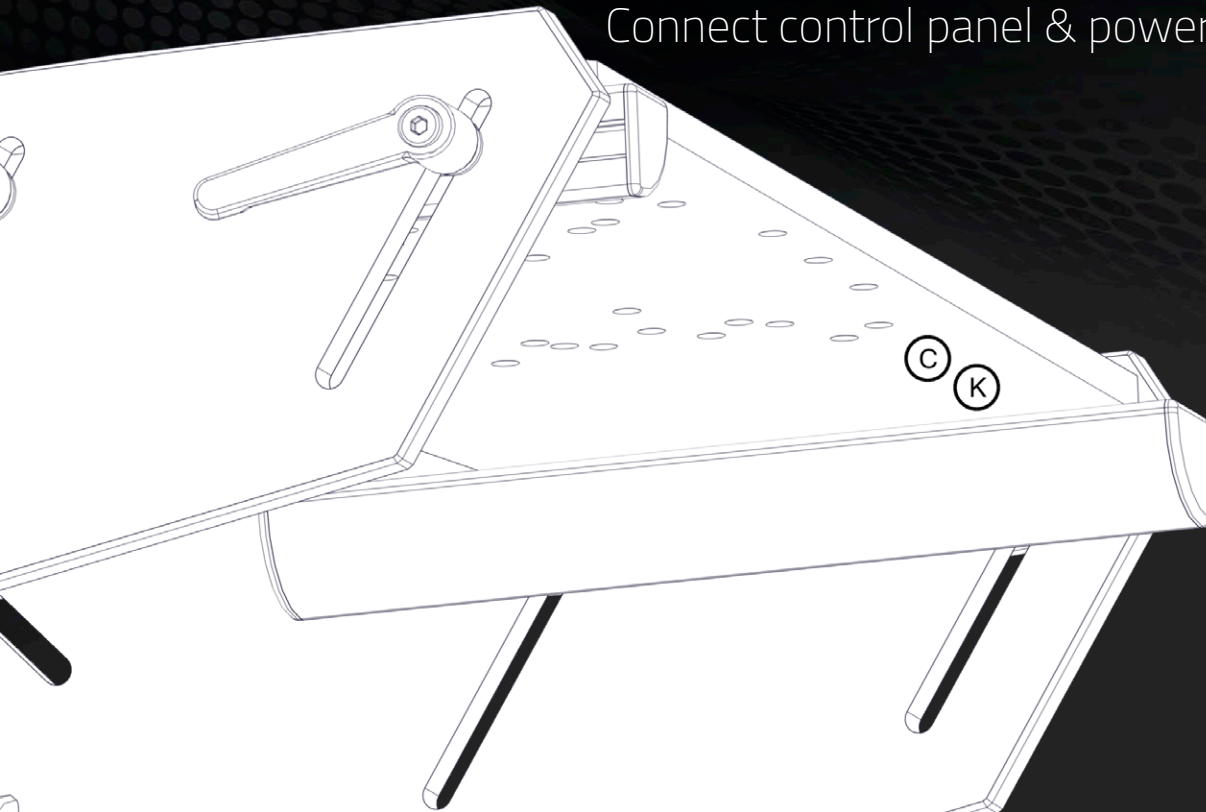




Attach the actuator to the cross support with the slide and bolt from the previous phase



Attach actuator control panel to wheel plate's pre-drilled holes  
Connect control panel & power supply to linear actuator & start adjusting!



Description	BOM ID	Qty
Actuator control panel	C	1
Screws and nuts for control panel	K	1